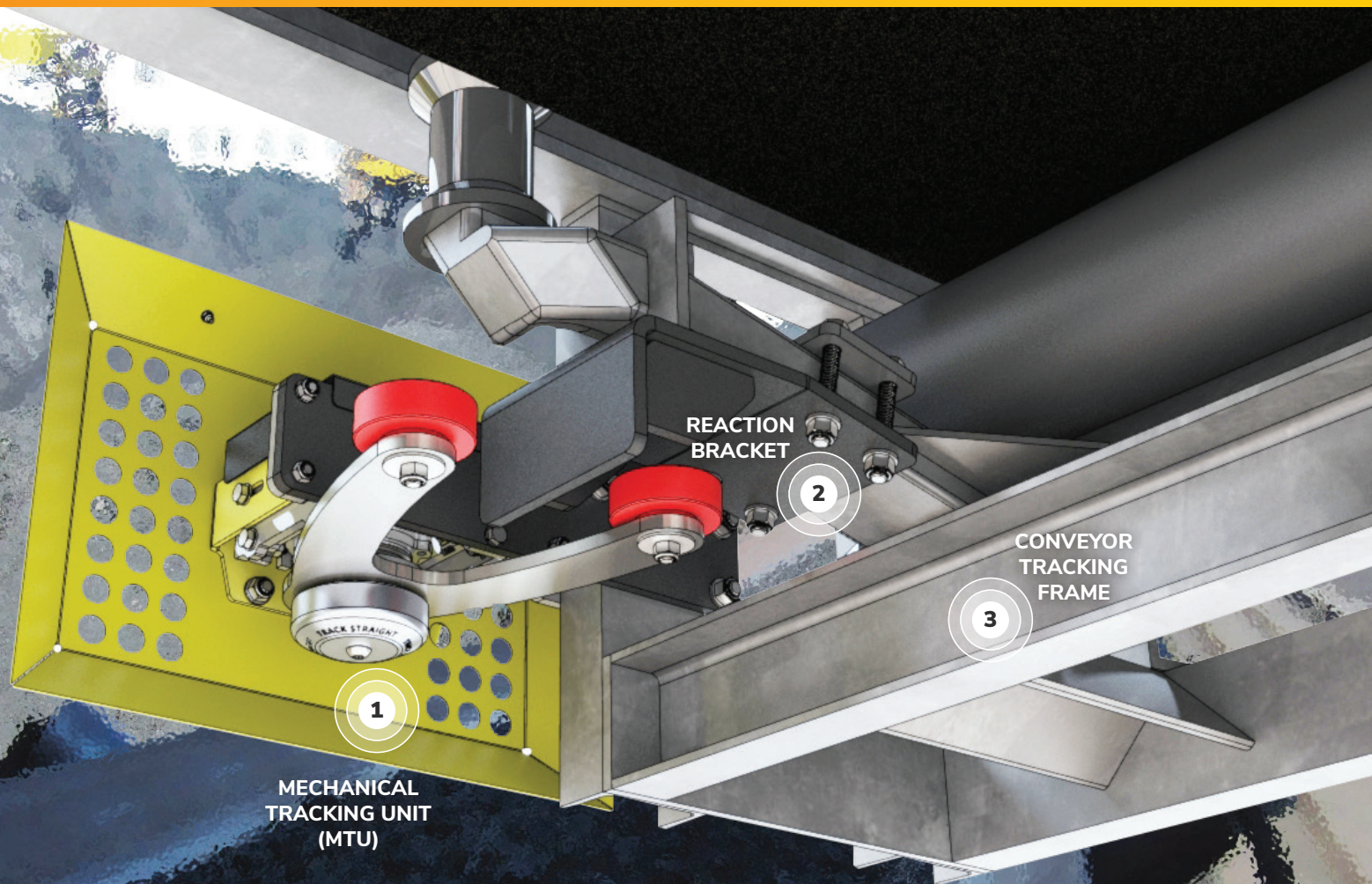


# TRACK STRAIGHT MECHANICAL CONVEYOR ALIGNMENT & TRACKING SYSTEM



For more information and other products, please contact us.

☎ 13000 MINING (13000 64 64 64)

✉ [info@innovativemining.com.au](mailto:info@innovativemining.com.au)

🌐 [www.innovativemining.com.au](http://www.innovativemining.com.au)



# PRODUCT INFORMATION

## TRACK STRAIGHT MECHANICAL TRACKING UNIT (MTU)



### STAY ON COURSE WITH TRACK STRAIGHT – THE FUTURE OF CONVEYOR BELT ALIGNMENT

This innovative tool allows operators to make incremental adjustments to a frame online, reducing the amount of live works. Components which contribute to the problems with belt drift include: rope, risk, isolation and maintenance. Together they contribute to safety risks as well as the high cost of down time. Manipulating tracking frames online puts lives at risk, and the downtime associated with conveyor tracking problems is often underestimated. Tying up tracking frames should be done during isolation, but the resulting downtime can be a costly process. Furthermore, it is currently common practice for many sites to tie up frames as a temporary fix to belt drift.

Unfortunately, these are generally forgotten about, causing a repeat of belt drift in the future. The elimination of live works and increasing productivity are the key goals of the Track Straight product. Our patented solutions provide safe online tracking of a conveyor belt through the manipulation of tracking frames through trough and return. Our mechanical units remove the need for isolation, whilst our automatic systems can correct conveyor tracking without the conveyor having to shut down. The result is improved safety and increased productivity.

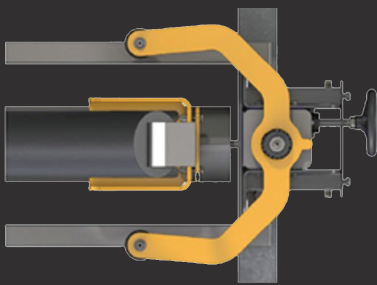
### BENEFITS

- **Live adjustment:** Online incremental adjustment for uninterrupted operations
- **Safe to use:** Worm drive gearbox and torque limiting safety features
- **Reduces Risk:** Improves operator safety and removes unsafe behaviours
- **Easy integration:** Versatile, adaptable, and easy installation
- **ROI:** Increased efficiency, reduced costs, and higher throughput
- **Backing:** Expert technical support available

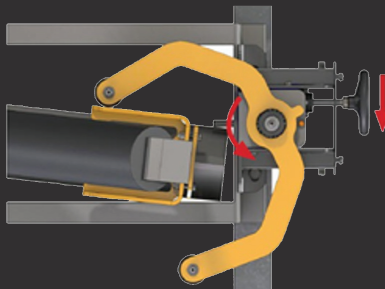
# PRODUCT INFORMATION

The tool allows the operator to make online incremental adjustments to a tracking frame, either trough or return by rotating a hand wheel that is outside of the conveyor pull wire. The unique design of the system means that force cannot be applied from the tracking frame back through the hand wheel, always keeping the operator safe. A torque limiting device means the tracking frame cannot be overloaded and a proximity switch logs each time the adjustment tool is used. The elimination of live works is the key goal of our **Track Straight** systems. Tying up tracking frames can be done during isolation, but the resulted down time can be a costly process – our mechanical units remove the need for isolation or operators making poor and unsafe behavior choices.

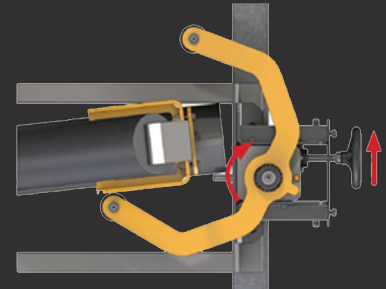
## POSITIONS



REST POSITION



TRACK RIGHT



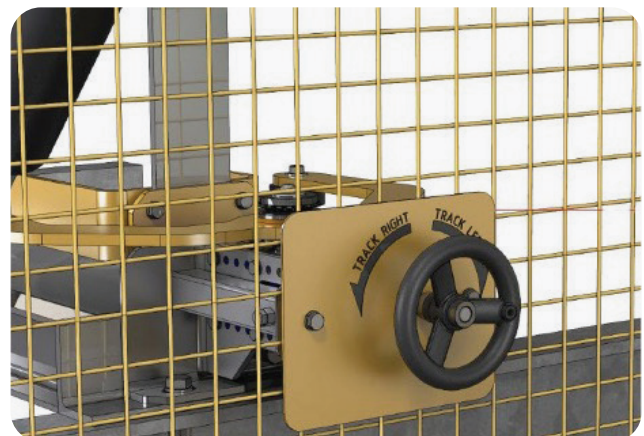
TRACK LEFT

## GUARD OPTIONS

HDPE GUARD OPTION



MESH GUARD OPTION

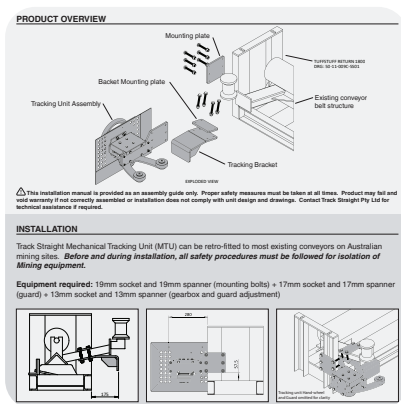
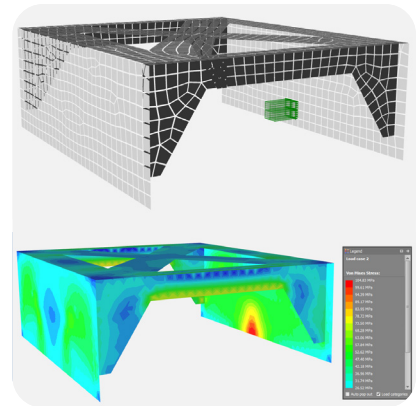
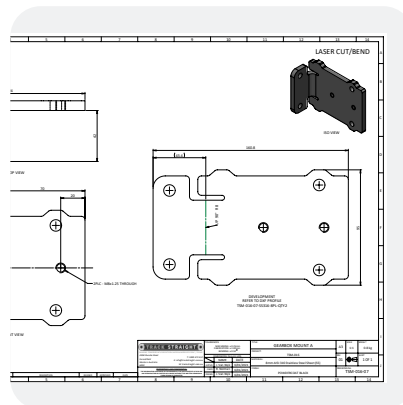
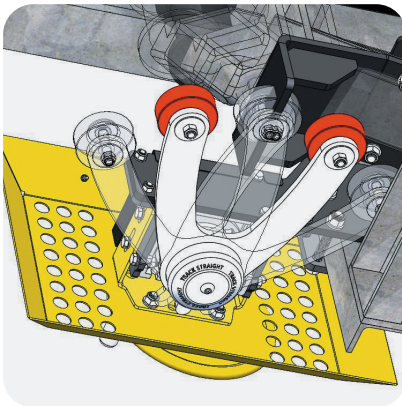


# HOW WE WORK

At Innovative Mining Services, our team employs a collaborative approach that aligns precisely with our customers' requirements, ensuring we meet all relevant design and manufacturing standards. Our team has the skills and experience to provide support during the customisation and development design phases.

We customise our standard design to accommodate various tracking frames and belt widths in operation. While the core principle remains consistent, we produce custom designs that guarantee optimal functionality. All manufactured solutions are completed using systematic process aimed at delivering products of exceptional quality.

1. Identify Tracking Frame
2. Adapt base unit to suit Tracking Frame
3. Create detailed engineering drawings of the assembly
4. Complete engineering checks
5. Produce Operational and Installation Manual
6. Manufacture with high quality materials and suppliers



For more information and other products, please contact us.

☎ 13000 MINING (13000 64 64 64)  
✉ [info@innovativemining.com.au](mailto:info@innovativemining.com.au)  
🌐 [www.innovativemining.com.au](http://www.innovativemining.com.au)